

St. Clair County Health Department Possible Employee COVID-19 Case*



The employee has any of the following symptoms (new/different/worse than baseline for any chronic illness):

One of the following

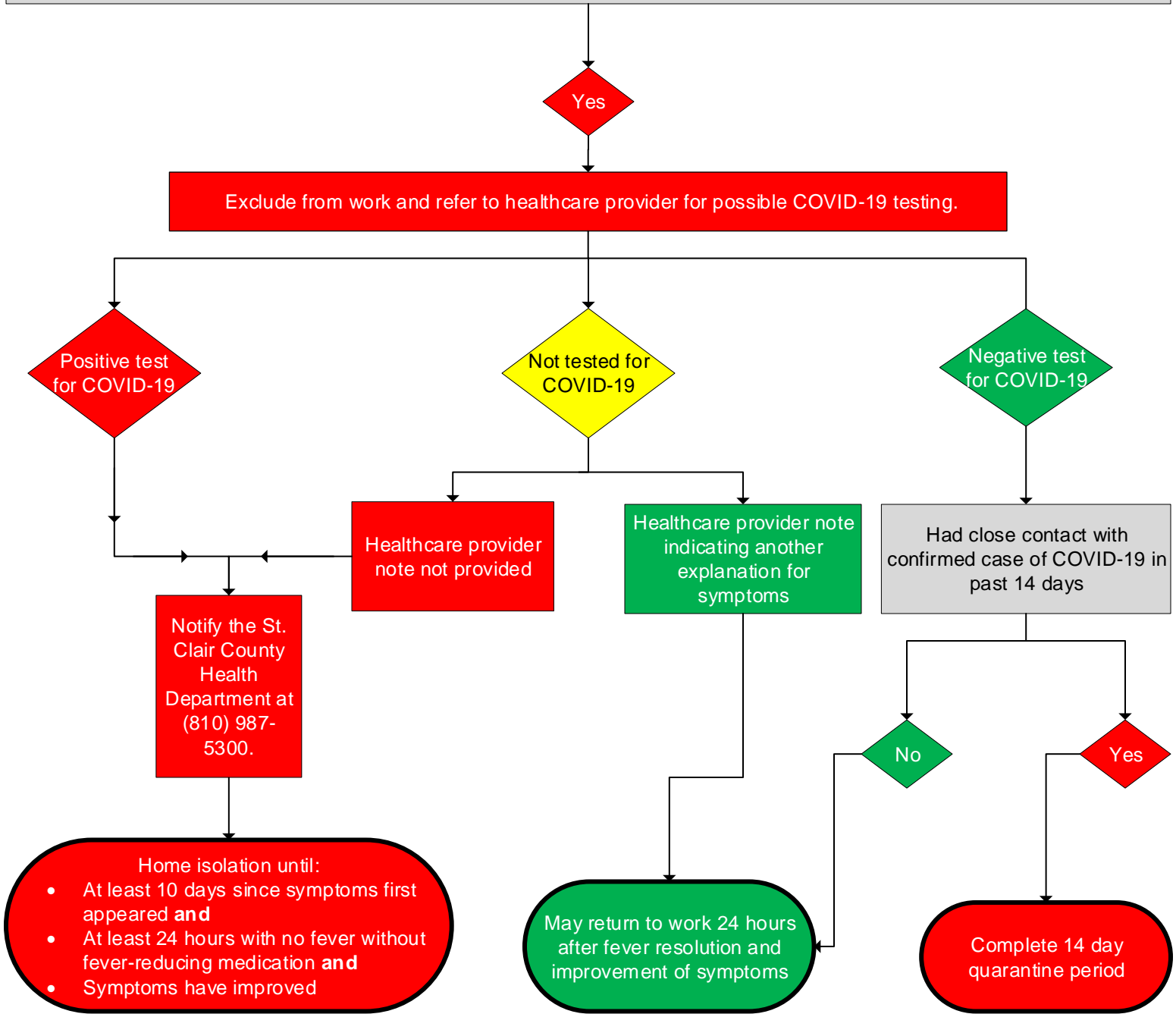
- Cough
- Shortness of breath
- Difficulty breathing
- New loss of smell
- New loss of taste

OR **Two** or more of the following

- Fever (measured or subjective)
- Chills
- Rigors (shaking or exaggerated shivering)
- Muscle aches
- Headache
- Sore throat
- Nausea or vomiting
- Diarrhea
- Fatigue
- Congestion or runny nose

OR

- Temperature 100.4 degrees Fahrenheit or higher



9/17/2020 *Per EO 2020-172: Exempted Staff; Health care professionals, workers at health care facilities, first responders, child protective service employees, workers at child caring institutions, workers at adult foster care facilities, correctional facility workers.